

Digital Conference System



CONTENTS

- **TL-5600 Digital Conference System**.....01
 - Discussion Unit TL-VDQ5600/ TL-VXQ5600.....04
 - Channel Selection Unit TC-Q5600.....06
 - Handheld Voting Keypad BJ-K5600.....08
 - Flush Voting Unit BJ-Q5600.....10
 - Loudspeaker SPK-10.....12
 - Connector CON-5600.....13
 - System Configuration.....14
 - System Components.....15

- **TL-5500 Digital Conference System**.....17
 - Chairman Unit / Delegate Unit.....18
 - Conference Terminal Feature Chart.....20
 - System Components.....20
 - System Configuration.....21

- **TL-6000 Digital Conference System**.....22
 - Chairman Unit / Delegate Unit.....22
 - Conference Terminal Feature Chart.....24
 - System Components.....24
 - System Configuration.....25

- **TL-4200 Digital Conference System**.....26
 - Chairman Unit / Delegate Unit.....27
 - Conference Terminal Feature Chart.....29
 - System Configuration.....30
 - System Components.....31
- **TL-3200 Digital Conference System**.....32
 - System Configuration.....35
- **Digital Conference System**.....36
 - Central Control Unit TL-Z3 / TL-ZB3 / TC-Z3 / TC-ZB3.....37
 - Extension Unit ZJ-KR.....38
 - Digital Conference Management System V5.0.....39
- **Automatic Camera Tracking System**.....41
 - HD Camera Auto-Tracking System**.....42
 - HD Video-Conferencing Camera GX-HD3300.....42
 - HD Video Camera Tracking Matrix GX-SDI0808(3G)/ GX-SDI0808(HD).... 44
 - SDI to HDMI Converter GX-SDI/HDMI101.....45
 - SD Camera Auto-Tracking System**.....47
 - High Speed Dome Camera GX-2200H.....47
 - High Speed Dome Camera GX-2200K.....48
 - Video Camera GX-2300T.....49
 - Speed Dome Controller GX-KB01.....49

TL-5600

Digital Conference System



GONSIN TL-5600 digital conference system is designed to provide a versatile flushmount solution including five function modules. All these modules are self-contained and can be flexibly configured, enabling conference terminals to offer more or less functions. Discussion unit allows the delegate to talk and request to talk, with automatic video tracking and a RJ-45 expansion port for additional plug-and-play handheld voting keypad. Channel selection unit offers 6 channels for participants to hear the selected channel through a personal headphone and adjust the volume level for comfortable listening. Voting unit is used for attendance registration, voting, election and evaluation. Loudspeaker can be added to the discussion unit depending on the venue needs.



- **Flexible module-based solution**

Five function modules can be stand-alone installed or easily combined to meet the exact customer needs, offering a versatile conference solution.



- **Smart voice activation mode**

The system can be operated under VOX mode so that the microphone is automatically turned on when the delegate speaks. VOX sensitivity can be set to H/M/L to suit conference environment. Voice activation mode enables hands-free operation with no need to push the microphone button.



- **Future-proof system expansion**

TL-5600 system offers perfect solution to upgrade the system and extend more features when necessary. Expansion port is designed to easily connect plug-and-play handheld module.



Discussion Unit

TL-VDQ5600/ TL-VXQ5600

Delegate discussion unit (TL-VDQ5600) allows the delegate to talk, request to talk, and register attendance. 1 to 4 delegate microphones can be active simultaneously. Built-in loudspeaker automatically mutes when the microphone is turned on. Chairman discussion unit (TL-VXQ5600) has the additional priority button to override all active delegate units to control the conference. Multiple chairman and vice-chairman discussion units can be used in one system, and can be active at any time regardless of preset delegate microphone limit.



TL-VXQ5600

● Main Features

- ◆ Voice-activated microphone mode
- ◆ Low susceptibility to interference from mobile phones
- ◆ Pluggable gooseneck microphone stem
- ◆ Waterproof and dustproof design
- ◆ Long microphone pick-up range

● Basic Functions

- ◆ Microphone mode: VOX/AUTO/FIFO/OPERATOR
- ◆ Attendance: registration by keypress or late registration
- ◆ LED indicator and MIC light will blink when attendance is to be registered. LED indicator will light on when attendance is successfully registered
- ◆ VOX sensitivity and mic time-out are adjustable
- ◆ Automatic video tracking, with preset position for panorama view

● Technical Specifications

Mounting type	flush mounting
Frequency response	50Hz-18KHz
Sensitivity	-46dB±4dB
S/N ratio	-95dB
THD	< 0.3%
Power input	24V
VOX sensitivity	H/M/L (76dB/80dB/82dB)
VOX auto mic time-out	20-250 seconds
Working temperature	0°C to 45°C
Storage temperature	-20°C to 50°C
Mic pickup range	100-600mm
Mic stem length	410mm standard, 310/510mm optional
Dimensions	100 × 40 × 66mm (W × D × H)
Net weight	86g



TL-VDQ5600

● TL-VQ5600 Discussion System

DESCRIPTION	MODEL	QTY/PCS	Remark
Central Control Unit	TC-ZB3	1	
Chairman Discussion Unit	TL-VXQ5600	1	
Delegate Discussion Unit	TL-VDQ5600	N	
Connector (conjunction box)	CON-5600	N	
Conference Management Software	V5.0	1	Optional
Loudspeaker	SPK-10	N	Optional
Extension Unit	ZJ-KR	N	Optional

■ Channel Selection Unit

TC-Q5600

The wired flushmount channel selection unit provides high immunity from interference and high security against unauthorized listening. Each unit comes with headphone jack and volume control so that the delegate can hear any selected channel on a personal headphone, and adjust volume level for comfortable listening.



● Main Features

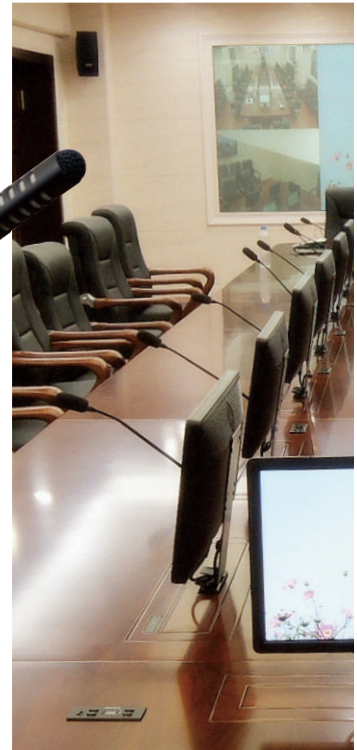
- ◆ Simple and stylish look
- ◆ 30000V ESD protection circuit design
- ◆ Waterproof and dustproof design

● Basic Functions

- ◆ 6 selectable channels for interpretation
- ◆ Loudspeaker volume level can be adjusted individually, or centrally by CCU and displayed on LCD
- ◆ Selected channel number is shown on LCD

● Technical Specifications

Mounting type	flush mounting
Powered	by the central control unit
Headphone jack	3.5mm
Working temperature	0°C to 45°C
Storage temperature	-20 to 50°C
Dimensions	100×40×66mm (W×D×H)
Net weight	62g



● TC-Q5600 Wired interpretation system

DESCRIPTION	MODEL	QTY/PCS	Remark
Central Control Unit	TC-Z3	1	
Channel Selection Unit, with volume control	TC-Q5600	N	
Connector (conjunction box)	CON-5600	N	
Extension Unit	ZJ-KR	N	Optional
Interpreter Console with gooseneck microphone	TC-F06	N	
Interpreter Headset with boom mic & volume control	TC-D2	N	
Stereo Headphone, with super heavy bass	TC-D3	N	Optional
Single Earphone	TC-D1	N	Optional

■ Handheld Voting Keypad

BJ-K5600



Connecting the discussion unit via RJ-45 port, the handheld voting keypad allows the delegate to register attendance and cast a vote for **YES/ABST/NO**, evaluation and election. Votes are counted automatically and the result is shown on display equipment such as

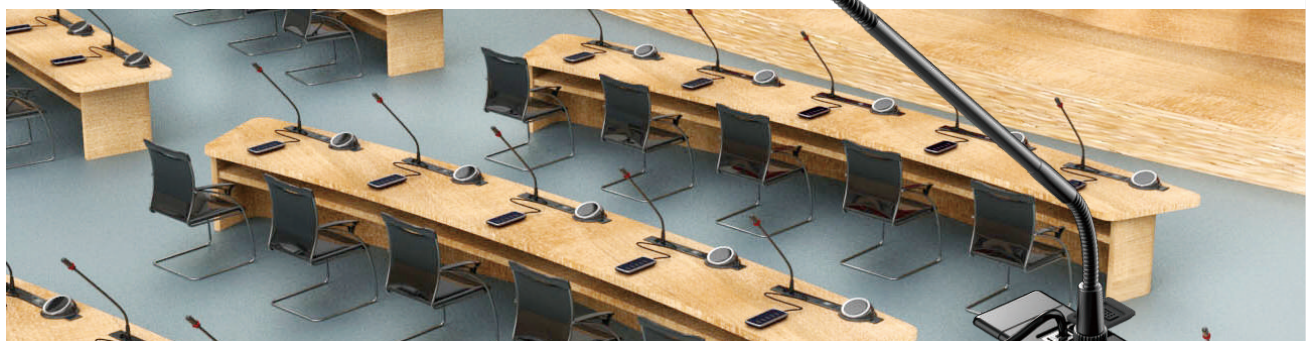
● Main Features

- ◆ Designed for ease of system expansion
- ◆ Handheld unit offers higher level of convenience and privacy
- ◆ LED indicators to show working status for voting
- ◆ Voting and evaluation options are defined by system software
- ◆ 30000V ESD protection circuit
- ◆ Waterproof and dustproof design



● Basic Functions

- ◆ Voting: YES/ABST/NO. Vote count and result display are enabled automatically by PC
 - Single-choice and multiple-choice voting
 - First keypress and final keypress voting
- ◆ Election: elect one or more out of multiple candidates, with 'competitive election', 'equal number election' and 'quick election'
- ◆ Evaluation (opinion polls): Best, Good, Fair, Poor
- ◆ When attendance is registered by IC card, green LED indicator will blink. For card error and invalid card, red LED indicator will light on. Green LED indicator will light on after attendance is registered
- ◆ LED indicator will blink to request for voting. LED indicator will light on for 3 seconds after a voting is casted, and then all LED indicators will be light off



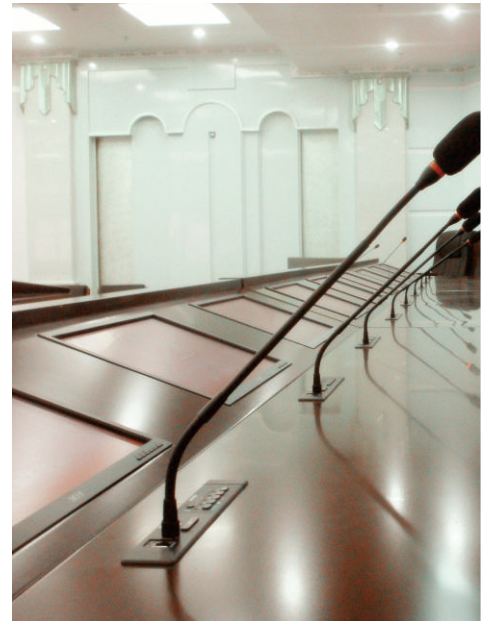
● Technical Specifications

Mounting connector	RJ45
Working temperature	0°C to 45°C
Storage temperature	-20°C to 50°C
Dimensions	120×55×15mm(H×W×D)
Net weight	105g

Flush Voting Unit

BJ-Q5600

The flush voting unit allows the delegate to register attendance and cast a vote for **YES/ABST/NO**, evaluation and election. Votes are counted automatically and the result is shown on display equipment such as large screen, projector/screen and white board. Results can be printed out or saved in CD.



● Main Features

- ◆ Simple and stylish design
- ◆ LED indicator to show working status for attendance and voting
- ◆ Voting and evaluation options are defined by system software
- ◆ 30000V ESD protection circuit design
- ◆ Waterproof and dustproof design



● Basic Functions

- ◆ Attendance registration: by IC card, microphone key press and late registration. Total, present and absent delegates can be counted and displayed
- ◆ Voting: **YES/ABST/NO**. Voting method can be defined by the system software. Vote count and result display are enabled automatically by PC
 - Single-choice and multiple-choice voting
 - First keypress and final keypress voting
- ◆ Election: elect one or more out of multiple candidates, with 'competitive election', 'equal number election' and 'quick election'
- ◆ Evaluation (opinion polls): Best, Good, Fair, Poor. Evaluation method can be defined by the system software
- ◆ When attendance is registered by IC card, green LED indicator will blink. For card error and invalid card, red LED indicator will light on. Green LED indicator will light on after attendance is registered
- ◆ LED indicator will blink to request for voting. LED indicator will light on for 3 seconds after a vote is casted, and then all LED indicators will be light off



● Technical Specifications

Mounting type	flush mounting
Powered	by the central control unit
Dimensions	100×40×66mm (W×D×H)
Net weight	75g
Working temperature	0°C to 45°C
Storage temperature	-20°C to 50°C



● BJ-Q5600 voting system

DESCRIPTION	MODEL	QTY/PCS	Remark
Central Control Unit	TC-ZB3	1	
Flush Voting Unit	BJ-Q5600	N	
Connector (conjunction box)	CON-5600	N	
Conference Management Software	V5.0	1	
Extension Unit	ZJ-KR	N	Optional
IC Card	BL7442	N	Optional
IC Card Encoder	GX-770	1	Optional

■ Loudspeaker

SPK-10

The flush loudspeaker delivers natural and clear sound. When it is used with the flush discussion unit, any smaller conference can be held without external sound equipment.



● Main Features

- ◆ Simple and stylish design
- ◆ High-definition audio processing
- ◆ 30000V ESD protection circuit MIC is turned on

● Basic Functions

- ◆ Used with discussion unit for delegate to hear the speech from other participants
- ◆ Loudspeaker volume level can be adjusted individually, or centrally by CCU
- ◆ Speaker mutes automatically to prevent feedback when MIC is turned on

● Technical Specifications

Mounting type	flush mounting
Powered	by the central control unit
Loudspeaker	2W/8Ω
Frequency response	200Hz-16KHz



Connector

CON-5600

The CON-5600 connector is designed to connect control units to function modules including discussion unit, channel selection unit, flush voting unit and/or loudspeaker for power supply and communication signals.

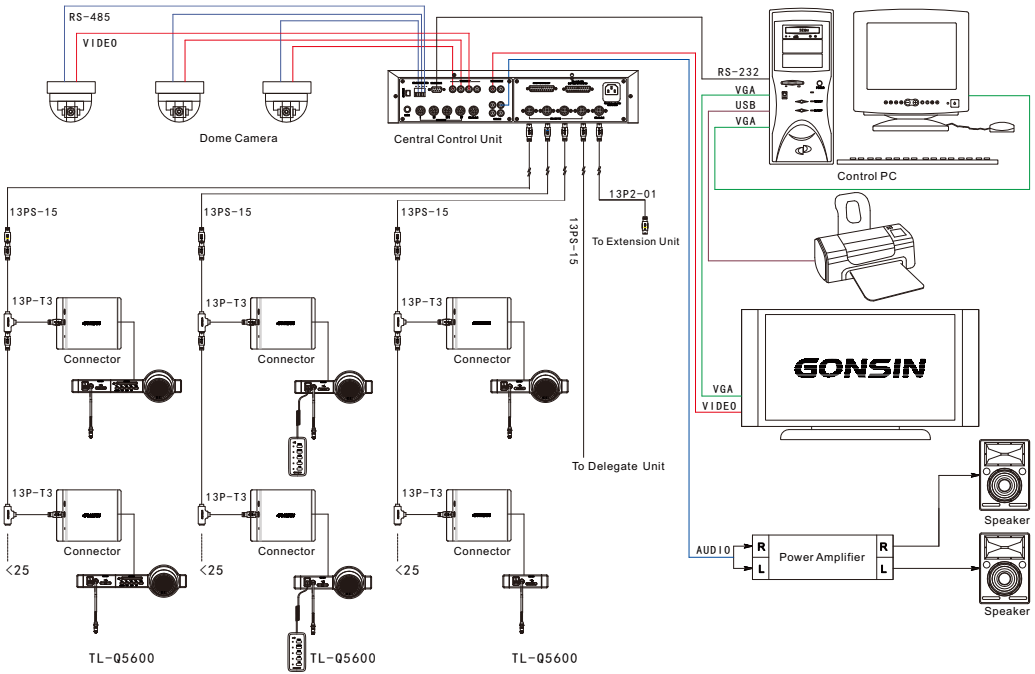


● Technical Specifications

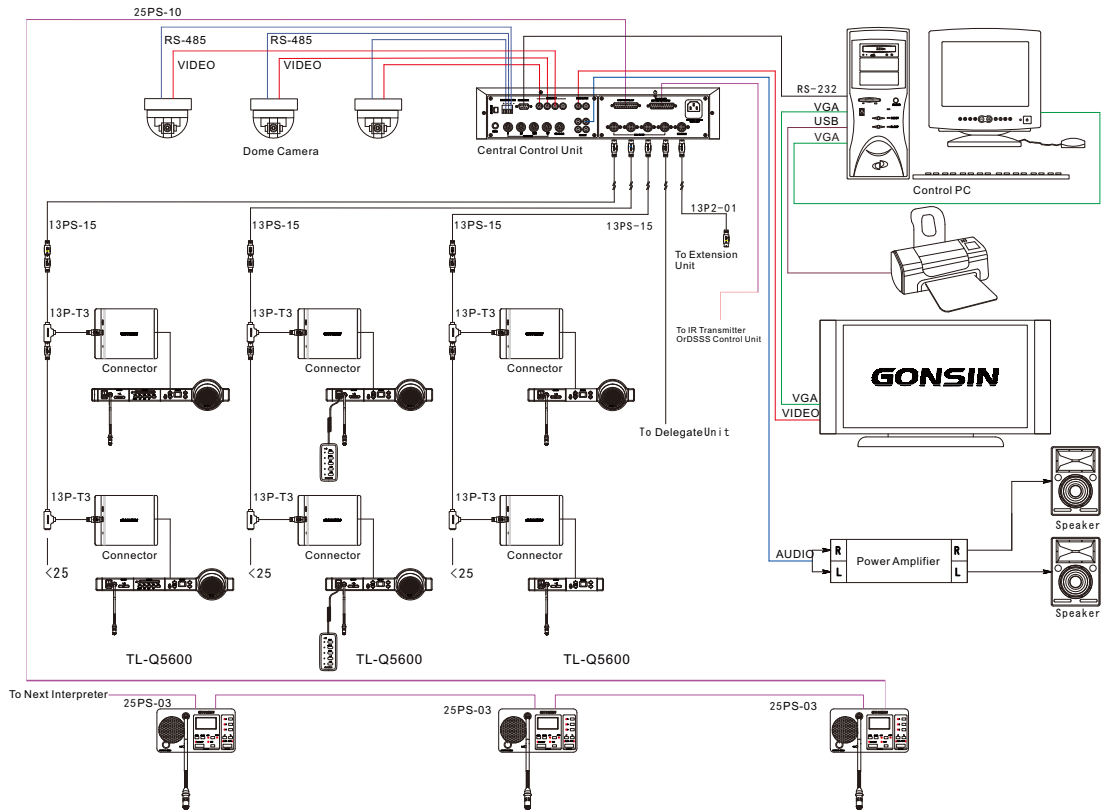
Working temperature	0°C to 45°C
Storage temperature	-20 to 50 °C
Dimensions (WxDxH)	167x160x40mm
Net weight	1083 g



System Configuration



System connection diagram for discussion / voting



System connection diagram for discussion / voting / interpretation

■ System Components

● TL-VQ5600+BJ-Q5600/BJ-K5600 Discussion system with voting

DESCRIPTION	MODEL	QTY/PCS	Remark
Central Control Unit	TC-ZB3	1	
Chairman Discussion Unit	TL-VXQ5600	1	
Delegate Discussion Unit	TL-VDQ5600	N	
Flush Voting Unit	BJ-Q5600	N	one in two
Handheld Voting Keypad	BJ-K5600	N	
Connector (conjunction box)	CON-5600	N	
Conference Management Software	V5.0	1	
Loudspeaker	SPK-10	N	Optional
Extension Unit	ZJ-KR	N	Optional
IC Card	BL7442	N	Optional
IC Card Encoder	GX-770	1	Optional

● TL-VQ5600+TC-Q5600 Discussion system with interpretation

DESCRIPTION	MODEL	QTY/PCS	Remark
Central Control Unit	TC-ZB3	1	
Chairman Discussion Unit	TL-VXQ5600	1	
Delegate Discussion Unit	TL-VDQ5600	N	
Channel Selection Unit, with volume control	TC-Q5600	N	
Loudspeaker	SPK-10	N	Optional
Connector (conjunction box)	CON-5600	N	
Extension Unit	ZJ-KR	N	Optional
Conference Management Software	V5.0	1	Optional
Interpreter Console with gooseneck microphone	TC-F06	N	
Interpreter Headset	TC-D2	N	
Stereo Headphone	TC-D3	N	Optional
Single Earphone	TC-D1	N	Optional

● **TL-VQ5600+TC-Q5600+BJ-Q5600/BJ-K5600**
Discussion system with interpretation and voting

DESCRIPTION	MODEL	QTY/PCS	Remark
Central Control Unit	TC-ZB3	1	
Chairman Discussion Unit	TL-VXQ5600	1	
Delegate Discussion Unit	TL-VDQ5600	N	
Flush Voting Unit	BJ-Q5600	N	one in two
Handheld Voting Keypad	BJ-K5600	N	
Channel Selection Unit, with volume control	TC-Q5600	N	
Loudspeaker	SPK-10	N	Optional
Connector (conjunction box)	CON-5600	N	
Conference Management Software	V5.0	1	
Extension Unit	ZJ-KR	N	Optional
IC Card	BL7442	N	Optional
IC Card Encoder	GX-770	1	Optional
Interpreter Console with gooseneck microphone	TC-F06	N	
Interpreter Headset	TC-D2	N	
Stereo Headphone	TC-D3	N	Optional
Single Earphone	TC-D1	N	Optional

TL-5500

Digital Conference System



GONSIN TL-5500 digital conference system, designed for seat arm flush mounting, offers an all-in-one conferencing solution featuring microphone discussion, interactive voting, simultaneous interpretation, attendance registration, video tracking, audiovisual recording and software control.

■ Chairman Unit / Delegate Unit

The conference unit allows the delegate to speak, request to speak, register attendance and cast a vote. Each unit comes with headphone jack and volume control for the delegate to listen to the floor audio and any interpreted language channel, and adjust volume level for comfortable listening. 1 to 4 delegate microphones can be active at the same time. Multiple chairman and vice-chairman units can be used in one system, and can be active at any time regardless of preset delegate mic limit. Chairman unit has the additional priority button to override all delegate units to control the conference.



● Main Features

- ◆ Compact design for seat arm flush mounting
- ◆ Highly resistant to mobile phone interference
- ◆ Channel selectors for interpretation listening
- ◆ Pluggable omnidirectional handheld microphone
- ◆ 5 buttons for voting and election





● Basic Functions

- ◆ Microphone discussion: push to talk or request to talk. AUTO/FIFO/OPERATOR modes are available for microphone management
- ◆ Language interpretation: 1+5 channels. Up/down buttons as channel selectors. Channel number is shown on LED. Headphone listening with volume control
- ◆ Attendance registration: by REG key press
- ◆ Voting: YES/ABST/NO. Vote counting and result display are enabled automatically by PC
 - Single-choice and multiple-choice voting
 - First keypress and final keypress voting
- ◆ Election: elect one or more out of N candidates, with 'competitive election', 'equal number election' and 'quick election'
- ◆ Supports automatic video tracking, with preset panoramic position

● Technical Specifications

Mounting type	chair armrest mounting
Language interpretation	1+5 channels
Mic pick-up range	up to 20 cm
Frequency response	50Hz-18kHz
S/N ratio	-95dB/1mV
Sensitivity	-46dB±4dB
Power input	24V DC
Microphone stem length	165 mm
Microphone length	120 cm (including cord)
Headphone and microphone jack	mini 3.5mm
Panel dimensions	210×50×2 mm (H×W×D)
Weight	0.55 kg



TL-VXQC5500



TL-VDQC5500



TL-VXQCB5500



TL-VDQCB5500



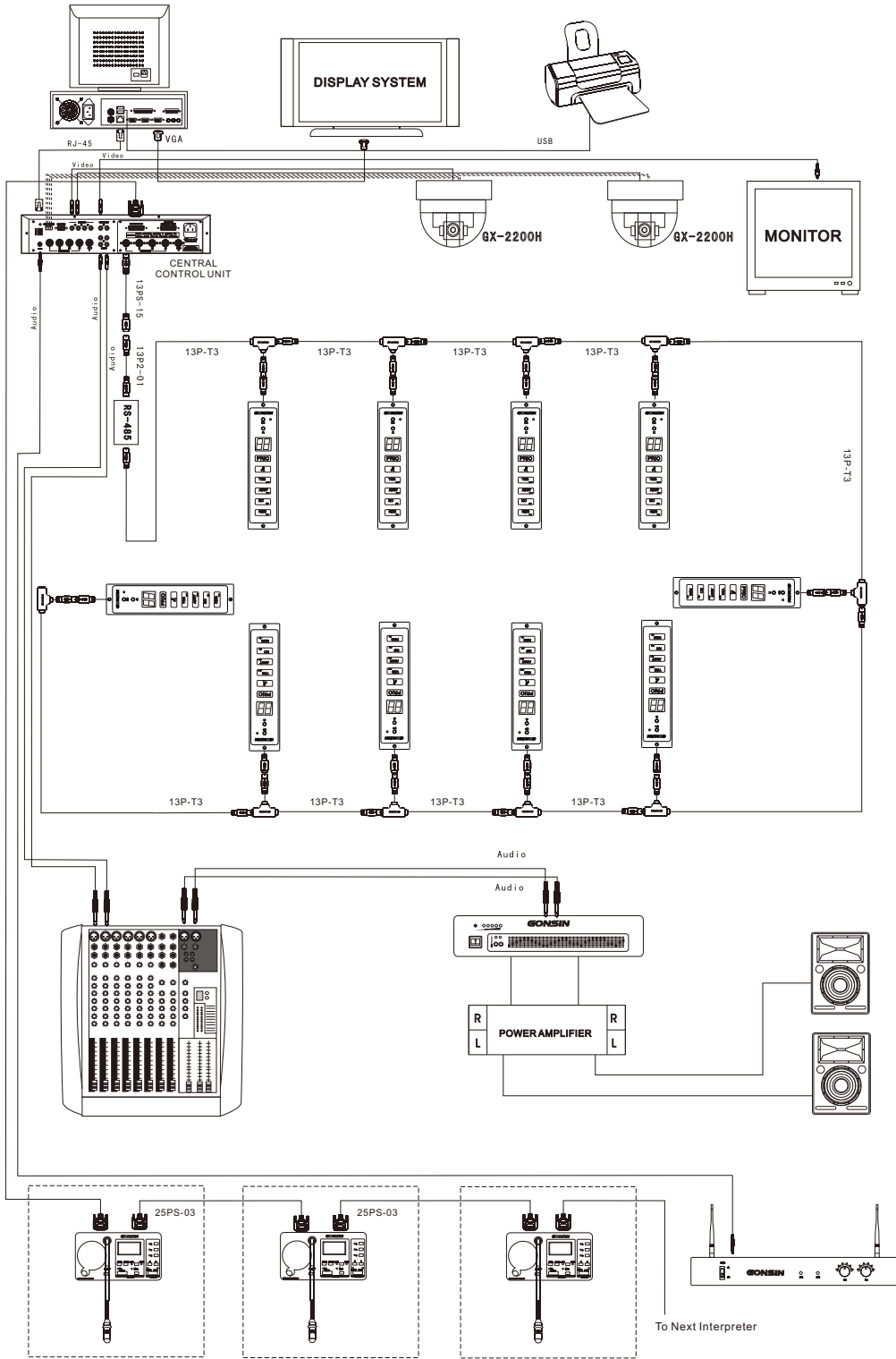
Conference Terminal Feature Chart

Model Number	Product Description	Handheld Microphone	Voting Facilities	Channel Selector	Phone Jack	Volume Control
TL-VXQC5500	Chairman Unit	✓		✓	✓	✓
TL-VDQC5500	Delegate Unit	✓		✓	✓	✓
TL-VXQCB5500	Chairman Unit	✓	✓	✓	✓	✓
TL-VDQCB5500	Delegate Unit	✓	✓	✓	✓	✓

System Components

Model Number	TL-VQC5500	TL-VQCB5500
Central Control Unit	TC-Z3	TC-ZB3
Extension Unit	ZJ- KR	ZJ- KR
Chairman Unit	TL-VXQC5500	TL-VXQCB5500
Delegate Unit	TL-VDQC5500	TL-VDQCB5500
Interpreter Console	TC-F06	TC-F06
Interpreter Headset	TC-D2	TC-D2
Single Earphone	TC-D1/TC-D3	TC-D1/TC-D3
Management Software	V5.0 (optional)	V5.0 (required)
T-type connection cable	13P-T3	13P-T3
Extension cable	13PS	13PS

System Configuration



TL-6000

Digital Conference System

TL-6000 digital conference system offers versatile conferencing solutions featuring microphone discussion, interactive voting, simultaneous interpretation, language distribution, attendance registration, video tracking, digital recording and software control.



■ Chairman Unit / Delegate Unit

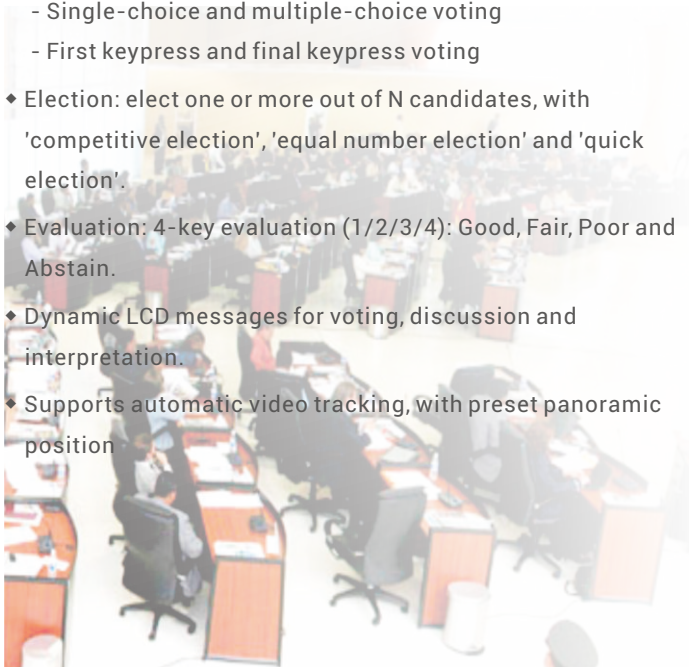
The conference unit allows the delegate to speak, request to speak, listen to speech and cast a vote. Each conference unit comes with headphone jack and volume control for delegates to listen to the floor audio and any interpreted language channel, and adjust volume level for comfortable listening. Built-in loudspeaker automatically mutes when the microphone is turned on. 1 to 4 delegate microphones can be active at the same time. Multiple chairman and vice-chairman units can be used in one system, and can be active at any time regardless of preset delegate mic limit. Delegate unit can be set as vice-chairman unit via software. Chairman unit has the additional priority button to override all delegate units to control the conference.

● **Features**

- ◆ Highly resistant to mobile phone interference
- ◆ Channel selectors for interpretation listening
- ◆ Pluggable microphone stem
- ◆ Built-in loudspeaker
- ◆ Long microphone pick-up range
- ◆ 5 buttons for voting and election
- ◆ Built-in chipcard reader
- ◆ White-on-blue backlit LCD
- ◆ Red ring luminant to indicate active mic

● **Functions**

- ◆ Microphone discussion: push to talk or request to talk. AUTO/FIFO/OPERATOR/VOX modes are available for microphone management.
- ◆ Language interpretation: 1+5 channels. Up/down buttons as channel selectors. Channel number is shown on LCD. Headphone listening with volume control.
- ◆ Attendance registration: by IC card, REG key press or late registration.
- ◆ Voting: **YES/ABST/NO**. Vote counting and result display are enabled automatically by PC
 - Single-choice and multiple-choice voting
 - First keypress and final keypress voting
- ◆ Election: elect one or more out of N candidates, with 'competitive election', 'equal number election' and 'quick election'.
- ◆ Evaluation: 4-key evaluation (1/2/3/4): Good, Fair, Poor and Abstain.
- ◆ Dynamic LCD messages for voting, discussion and interpretation.
- ◆ Supports automatic video tracking, with preset panoramic position



TL-VX6000

TL-VD6000



TL-VXB6000

TL-VDB6000



TL-VXC6000

TL-VDC6000



TL-VXCB6000

TL-VDCB6000

● Technical Specifications

Mounting type	fixed or portable tabletop	Built-in loudspeaker	2W/8Ω
Language interpretation	1+5 channels	LCD screen	65mm x 32mm back-lit
Frequency response	50Hz to 18KHz	Microphone stem length	425 mm
S/N ratio	-95dB/1mV	Operating temperature	0°C to 45°C
Sensibility	-46 ± 4dB	Storage temperature	-20°C to 50°C
Power input	24V DC	Dimensions	210 X 128 x 65 mm(WxDxH)
Microphone pick-up range	up to 600 mm	Weight	0.75kg
Headphone sockets	3.5mm jack		

■ Conference Terminal Feature Chart

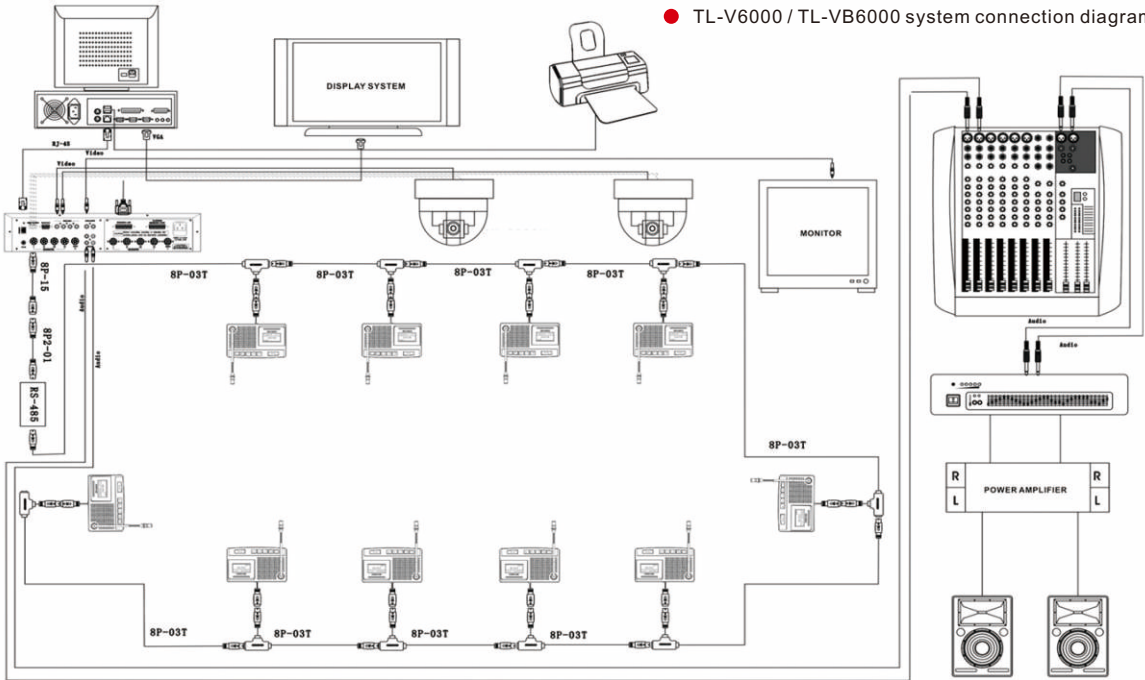
Model Number	Product Description	Gooseneck Microphone	Voting Facilities	Channel Selector	Loud speaker	Phone Jack	LCD Screen	Card Reader
TL-VX6000	Chairman Unit	✓			✓	✓	✓	✓
TL-VD6000	Delegate Unit	✓			✓	✓	✓	✓
TL-VXB6000	Chairman Unit	✓	✓		✓	✓	✓	✓
TL-VDB6000	Delegate Unit	✓	✓		✓	✓	✓	✓
TL-VXC6000	Chairman Unit	✓		✓	✓	✓	✓	✓
TL-VDC6000	Delegate Unit	✓		✓	✓	✓	✓	✓
TL-VXCB6000	Chairman Unit	✓	✓	✓	✓	✓	✓	✓
TL-VDCB6000	Delegate Unit	✓	✓	✓	✓	✓	✓	✓

■ System Components

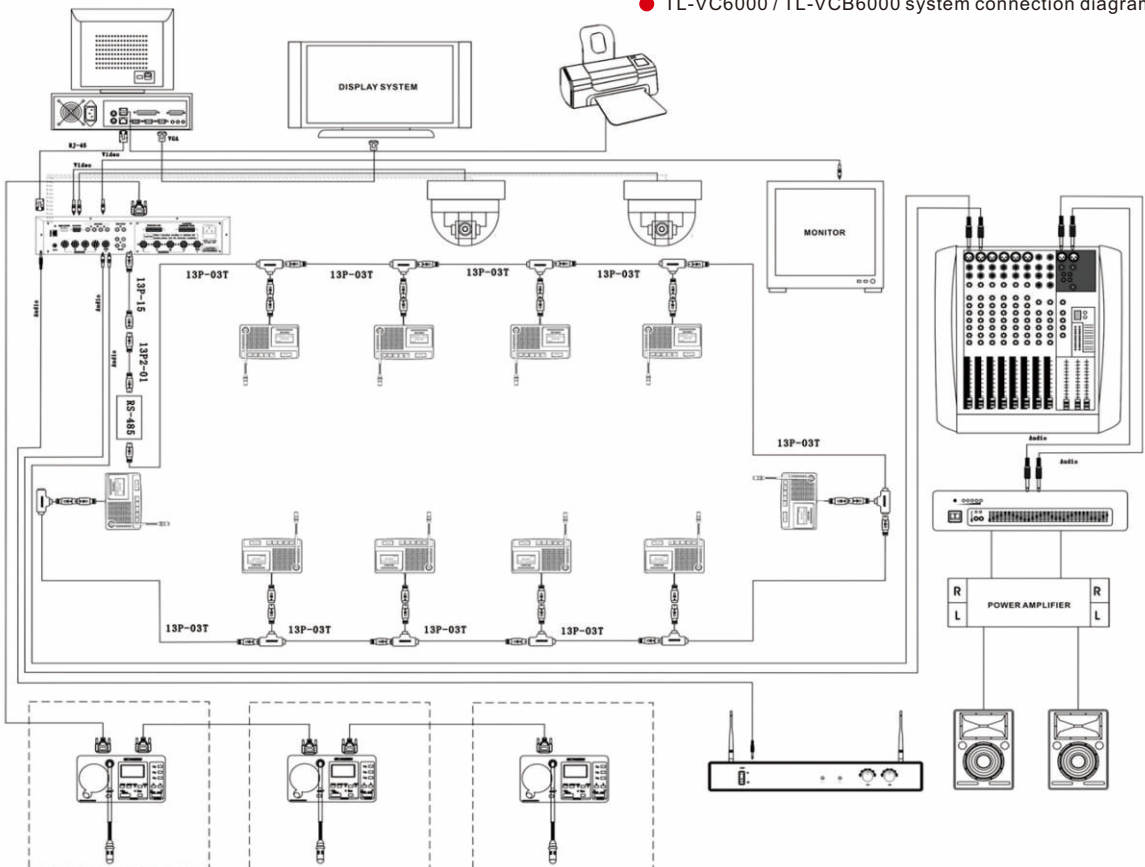
Model Number	TL-V6000	TL-VC6000	TL-VB6000	TL-VCB6000
Central Control Unit	TL-Z3	TC-Z3	TL-ZB3	TC-ZB3
Extension Unit	ZJ- KR	ZJ- KR	ZJ- KR	ZJ- KR
Chairman Unit	TL-VX6000	TL-VXC6000	TL-VXB6000	TL-VXCB6000
Delegate Unit	TL-VD6000	TL-VDC6000	TL-VDB6000	TL-VDCB6000
Interpreter Console		TC-F06		TC-F06
Interpreter Headset		TC-D2		TC-D2
Headphone		TC-D3		TC-D3
Management Software	V5.0 (optional)	V5.0 (optional)	V5.0(optional)	V5.0(optional)
IC Card Encoder			GX-770	GX-770
IC Card			BL7442	BL7442
T-type connection cable	8P-T3	13P-T3	8P-T3	13P-T3
Extension cable	8PS	13PS	8PS	13PS

System Configuration

TL-V6000 / TL-VB6000 system connection diagram



TL-VC6000 / TL-VCB6000 system connection diagram



TL-4200 Digital Conference System



GONSIN TL-4200 digital conference system offers versatile conferencing solutions featuring microphone discussion, interactive voting, simultaneous interpretation, language distribution, video tracking, digital recording and software control.

■ Chairman Unit / Delegate Unit



The conference unit allows the delegate to speak, request to speak and listen to speech, register attendance and cast a vote. Each unit comes with headphone jack and volume control for delegates to listen to the floor speaker and any interpreted language channel, and adjust volume level for comfortable listening. Built-in speaker automatically mutes when microphone is turned on. 1 to 4 delegate microphones can be active at the same time. Multiple chairman and vice-chairman units can be used in one system, and can be active at any time regardless of preset delegate mic limit. Delegate unit can be configured as vice-chairman unit via software. Chairman unit has the additional priority button to override all delegate units to control the conference.



● Main Features

- ◆ Highly resistant to mobile phone interference
- ◆ Channel selectors for interpretation listening
- ◆ Pluggable gooseneck microphone stem
- ◆ Long microphone pick-up range
- ◆ Low profile built-in loudspeaker
- ◆ 5 buttons for voting and election
- ◆ Built-in chipcard reader
- ◆ White-on-blue backlit LCD
- ◆ Red ring luminant to indicate active mic



● Basic Functions

- ◆ Microphone discussion: push to talk or request to talk. AUTO/FIFO/OPERATOR modes are available for microphone management
- ◆ Language interpretation: 1+5 channels. Up/down buttons as channel selectors. Channel number is shown on LCD. Headphone listening with volume control
- ◆ Attendance registration: by IC card or MIC key press
- ◆ Voting: YES/ABST/NO. Vote counting and result display are enabled automatically by PC
 - Single-choice and multiple-choice voting
 - First keypress and final keypress voting
- ◆ Election: elect one or more out of N candidates, with 'competitive election', 'equal number election' and 'quick election'
- ◆ Evaluation: 4-key evaluation: Good, Fair, Poor and Abstain
- ◆ Dynamic LCD messages for voting, discussion, interpretation and attendance registration
- ◆ Supports automatic video tracking, with preset panoramic position



TL-VD4200

TL-VX4200



TL-VDB4200

TL-VXB4200



TL-VDC4200

TL-VXC4200



TL-VDCB4200

TL-VXCB4200

● Technical Specifications

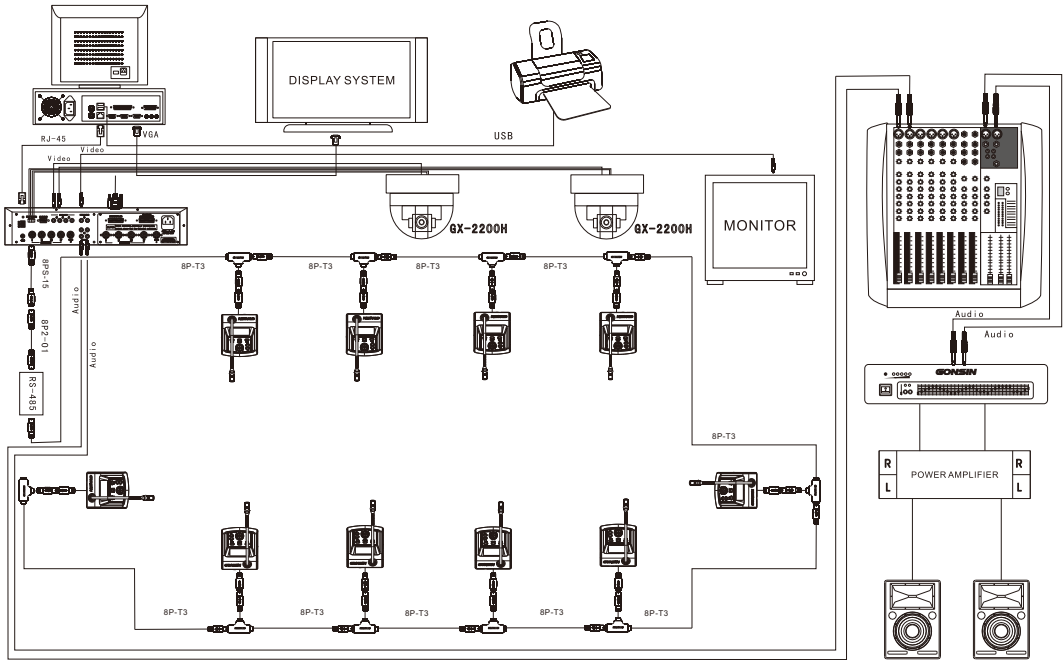
Mounting type	fixed or portable tabletop
Language interpretation	1+5 channels
Mic pick-up range	up to 60 cm
Frequency response	50Hz - 18kHz
S/N ratio	-95dB/1mV
Sensitivity	-46dB±4dB
Power input	24V DC
Microphone stem length	410mm
LCD	47×18mm
Headphone jack	mini 3.5mm
Internal loudspeaker	8Ω/2W
Dimensions	173×145×57 mm (W×D×H)
Weight	0.8 kg
Housing colour scheme	black or silver

■ Conference Unit Feature Chart

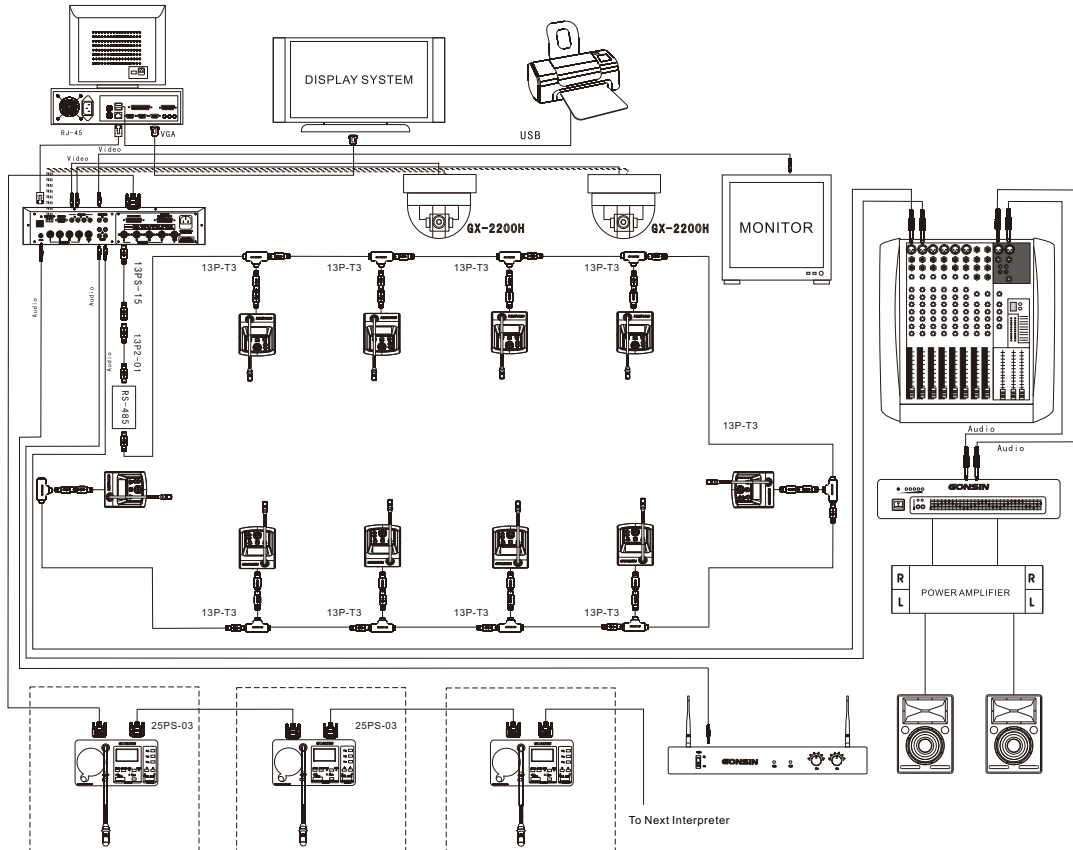
Model Number	Product Description	Gooseneck Microphone	Voting Facilities	Channel Selector	Loud speaker	Phone Jack	LCD Screen	Card Reader
TL-VX4200	Chairman Unit	✓			✓	✓	✓	✓
TL-VD4200	Delegate Unit	✓			✓	✓	✓	✓
TL-VXB4200	Chairman Unit	✓	✓		✓	✓	✓	✓
TL-VDB4200	Delegate Unit	✓	✓		✓	✓	✓	✓
TL-VXC4200	Chairman Unit	✓		✓	✓	✓	✓	✓
TL-VDC4200	Delegate Unit	✓		✓	✓	✓	✓	✓
TL-VXCB4200	Chairman Unit	✓	✓	✓	✓	✓	✓	✓
TL-VDCB4200	Delegate Unit	✓	✓	✓	✓	✓	✓	✓



■ System Configuration



TL-V4200 / TL-VB4200 system connection diagram



TL-VC4200 / TL-VCB4200 system connection diagram

■ System Components

Model Number	TL-V4200	TL-VC4200	TL-VB4200	TL-VCB4200
Central Control Unit	TL-Z3	TC-Z3	TL-ZB3	TC-ZB3
Extension Unit	ZJ- KR	ZJ- KR	ZJ- KR	ZJ- KR
Chairman Unit	TL-VX4200	TL-VXC4200	TL-VXB4200	TL-VXCB4200
Delegate Unit	TL-VD4200	TL-VDC4200	TL-VDB4200	TL-VDCB4200
Interpreter Console		TC-F06		TC-F06
Interpreter Headset		TC-D2		TC-D2
Headphone		TC-D3		TC-D3
Management Software	V5.0 (optional)	V5.0 (optional)	V5.0	V5.0
IC Card Encoder			GX-770	GX-770
IC Card			BL7442	BL7442
T-type connection cable	8P-T3	13P-T3	8P-T3	13P-T3
Extension cable	8PS	13PS	8PS	13PS



TL-3200

Digital Conference System



● General Description

TL-3200 digital conference system allows the delegate to speak, request to speak and hear the speech. Each discussion unit comes with headphone jack and volume control for the delegate to hear the floor audio, and adjust volume level for comfortable listening. 1 to 4 delegate microphones can be active at the same time.

● Main Features

- ◆ Highly resistant to mobile phone interference
- ◆ Supports HD video camera tracking
- ◆ Multiple chairman vice-chairman units are allowed
- ◆ Pluggable gooseneck microphone

● Basic Functions

- ◆ Selectable microphone modes: AUTO / FIFO / OPERATOR
- ◆ Floor audio listening via headphone or built-in loudspeaker
- ◆ Attendance: key press and supplementary registration
- ◆ Up to 20 chairman and vice-chairman units for one system
- ◆ Chairman units can be active at any time
- ◆ Chairman unit can override/mute all the active delegate units
- ◆ Supports automatic video camera tracking with preset panoramic position

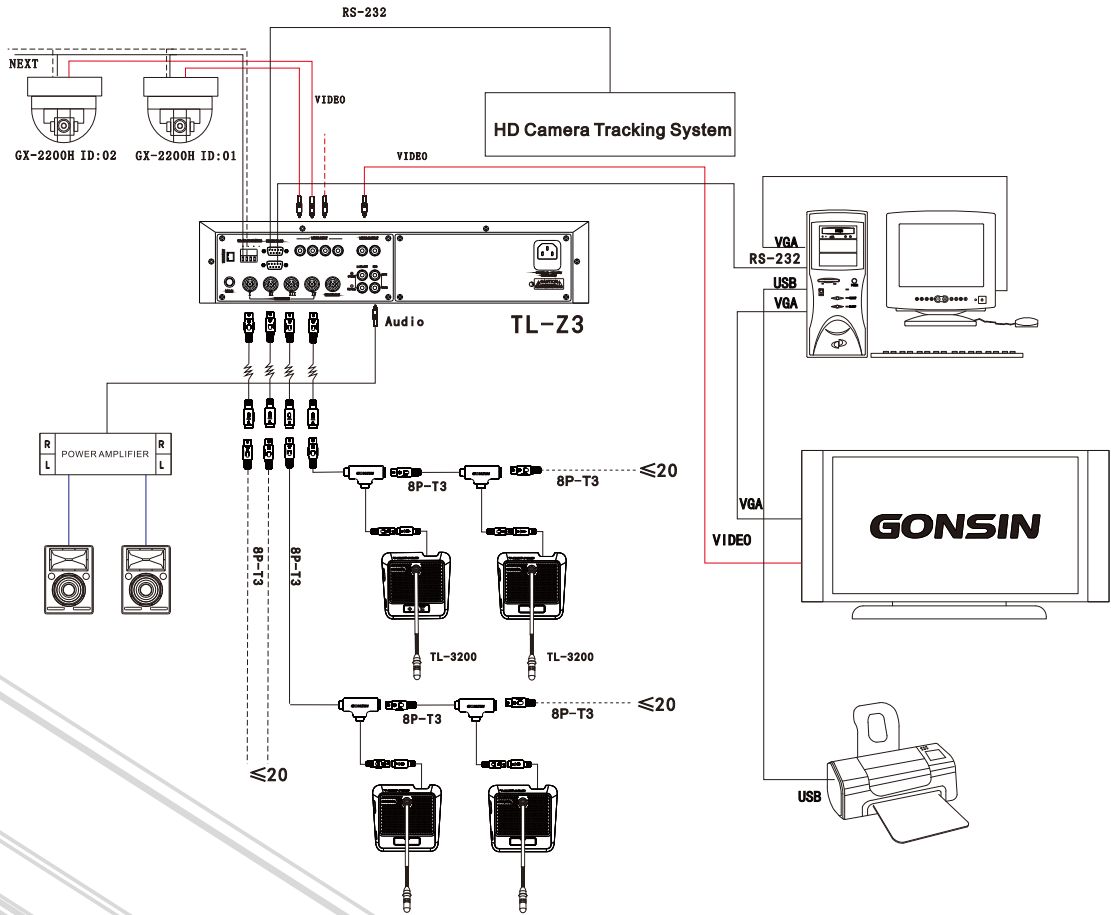


● Technical Specifications

Mounting type	tabletop
Frequency response	50Hz-18kHz
Sensitivity	-46dB±4dB
THD	<0.3%
S/N ratio	-95dB/1mV
Power input	24V DC
Microphone length	standard 410 mm, optional 310/510mm
Headphone jack	mono 3.5mm
Internal loudspeaker	4Ω/3W
Weight	0.75 kg
Dimensions	160×140×53 mm (W*D*H)
Operating temperature	0~45°C
Storage temperature	-20~50°C



■ System Configuration



Digital Conference System

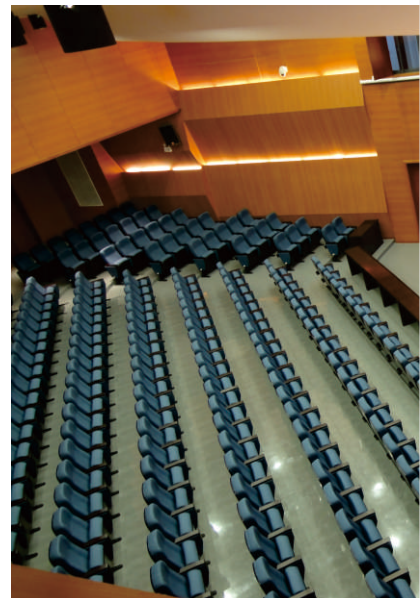


■ Central Control Unit

TL-Z3 / TL-ZB3 / TC-Z3 / TC-ZB3

● Main features in stand-alone mode

- ◆ 1 to 4 delegate microphones can be active simultaneously
- ◆ Selectable microphone mode: AUTO/FIFO/OPERATOR/VOX
- ◆ Microphone sensitivity and auto-off time can be preset
- ◆ Volume level can be adjusted for single or all loudspeakers
- ◆ ID number writing for each unit using LCD on front panel
- ◆ 6 channels are available for simultaneous interpretation
- ◆ Automatic video tracking with up to 4 dome cameras
- ◆ Built-in DSP processor for acoustic feedback prevention
- ◆ Built-in treble/bass compensation for better sound quality



● Extended features under PC/software control

- ◆ Centralized conference management
- ◆ Operator can allow or reject delegate request to talk
- ◆ Speaking time limit can be preset for conference units
- ◆ Delegate unit can be set to be vice-chairman (VIP) unit
- ◆ Voting, Election, Quick Election, Evaluation
- ◆ Attendance registration using IC cards or REG button



CENTRAL CONTROL UNIT
TL-Z3 / TL-ZB3



CENTRAL CONTROL UNIT
TC-Z3 / TC-ZB3



● Technical Specifications

Standard 2U housing for 19" rack mounting	
Connection of conference units in up to 4 lines	
Each line connects up to 25 conference units	
Cable length is up to 100 metres for each line	
RS485 repeaters can be used to extend cable length	
Basic system capacity	60-70 conference units
Active delegate microphone limit	1/2/3/4
PC communication	RS232, Ethernet
Video camera communication	RS-485
Video camera supported	up to 4
Video tracking protocol	Pelco-P9600 / Sony-VISCA
AV matrix switcher input	RCA × 4 (1Vp-p, 75Ω)t
AV matrix switcher output	RCA × 2 (1Vp-p, 75Ω)
MIC IN	6.5mm jack, 0.775V
REC OUT audio output	0-2.8V Vpp
S/N ratio	-95dB
THD	< 0.3%
Power supply	220V/50Hz or 110V/60Hz, ±10%
Maximum power	300W
Operating temperature	0 °C to 45 °C
Storage temperature	-20 °C to 50 °C
Dimensions	485×325×90mm (W×D×H)
Weight	14 kg

■ Extension Unit

ZJ-KR

ZJ-KR extension unit connects the central control unit via a 8P2-01/13P2-01 expander cable. Multiple units can be cascaded together to support 200 conference units on one central control unit.

● Technical specifications

Power Supply	110/220VAC±10%, 50-60Hz
Maximum Power	300W
Standard capacity	60-70 conference units
Operating temperature	0°C to 45°C
Storage temperature	-20°C to 50°C
Dimensions	485×325×90mm (W×D×H)

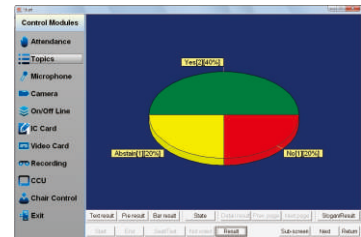
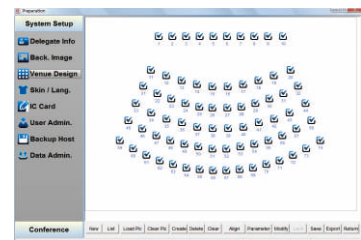


START - conference control

- ◆ Attendance registration
- ◆ Voting control (Yes/No/Abst)
- ◆ Evaluation control (Good/Fair/Poor)
- ◆ Election control (Yes/No/Abst)
- ◆ Quick Election (1/2/3/4/5)
- ◆ Microphone control
- ◆ Script control
- ◆ Slogan display
- ◆ Camera control
- ◆ IC card read/write
- ◆ Video recording

REPORT - Post-event data

- ◆ Delegate data
- ◆ Voting result
- ◆ Election result
- ◆ Evaluation result



Automatic Camera Tracking System





HD Camera Auto-Tracking System

GONSIN's high definition automatic camera tracking system is elaborately designed by adopting international advanced technology. It is used with discussion system together. It can automatically track spokesman. The high definition automatic camera tracking system consists of HD video camera tracking matrix, HD video conference camera and HD video signal switcher. It makes high quality and smooth image.

■ HD Video-Conferencing Camera

GX-HD3300

● Features

- ◆ Image quality is high definition and super clear.
- ◆ Low noise,high signal-to-noise ratio
- ◆ Wide range, high speed, low noise pan / tilt operation
- ◆ Full HD and multiple format video output



● Specifications

Camera, lens	
Image Inductor	1/3" High quality HD CMOS inductor
Effective Pixels	Motion picture:16:9, 2.07megapixel
	Static picture:16 : 9, 2.1megapixel
Video Signal	1080P60/50/30/25 、 1080I60/50、 720P60/50/30/25
Zoom rate	18 x optical,f=f = 4.7 ~ 84.6mm
Angel of view	wide:55°,tele:3.8°
Sensitivity	1.8Lux
White balance	Auto/Manual
Focus	Auto/Manual
Iris	Auto/Manual
Gain control	Auto/Manual
Balance Compensation	Auto/Manual
Signal-to Noise	>50dB
Input/Output interface	
HD interface (Optional)	DVI、 HD-SDI(3G)
Control signal interface	8pins mini DIN
Control signal format	Start bit:1 Data bit:8 Stop bit:1 Baud rate:9600/4800/2400bps
Power interface	HEC3800 socket
General Specification	
Performance	Auto pan scan: ±120°, Auto flip:-30° ~ +90°
	Pan speed: 1-80°/s, Tilt speed: 1-50°/s
	Preset speed: pan speed: 40°/s, Tilt speed: 30°/s
	Preset: 128 positions
Control mode	RS-232/485, VISCA/Pelco-D/Pelco-P
Power adapter	AC110V-AC220V→DC12V/2.5A
Power Supply	DC12V(DC11.5-DC12.5V)
Power consumption	18W(Maximum)
Storage temperature	-10 °C ~ 60 °C
Operating temperature	0 °C ~ 45 °C
Dimensions	265mmX144mmX171mm
Weight	1.9Kg
Environment	Indoor
Installation	desk top,indoor ceiling or wall mount

HD Video Camera Tracking Matrix

GX-SDI0808(3G)/ GX-SDI0808(HD)



● Specifications

Model	GX-SDI0808(3G)	GX-SDI0808(HD)
Character		
Speed	Maximum: 3Gbps	Maximum: 1.5Gbps
Compatible bitstream	143Mbps ~ 3Gbps	143Mbps~1.5Gbps
Balance ability	100m @3G (Belden 1694A)	
Clock recovery	Optional	
Input		
Signal type	SDI/HD-SDI/3G-SDI signal	SDI/HD-SDI signal
Interface form	BNC	
Resistance	75Ω	
Reflection loss	> 18dB 5MHz-3GHz	
Channel number	8 channels	
Output		
Signal type	SDI/HD-SDI/3G-SDI signal	SDI/HD-SDI signal
Interface form	BNC	
Output amplitude	800mv±5%	
DC offset	0V±0.5V	
Signal overshoot	0V±0.5V	
Signal jitter	< 0.2 UI	
Resistance	75Ω	
Channel number	8 channels	
Control type		
Serial control interface	RS-232 · 9- pins female D-type interface	
baud rate and protocol baud rate	9600	
Date bit	8	
Stop bit	1, no parity	
Structure of serial control interface	2=TX · 3=RX · 5=GND	
Allowable control port	PC and GONSIN conference system.	
specifications		
Power supply	100VAC ~ 240VAC, 50/60 Hz, The adaptive power supply	
Power	≤40W	
Storage temperature	-20 °C ~ 60 °C	
Operating temperature	-10 °C ~ 55 °C	
Relative humidity	20% ~ 95%	
Mean time to failure(MTTF)	30,000 hours	

SDI to HDMI Converter

GX-SDI/HDMI101

Features

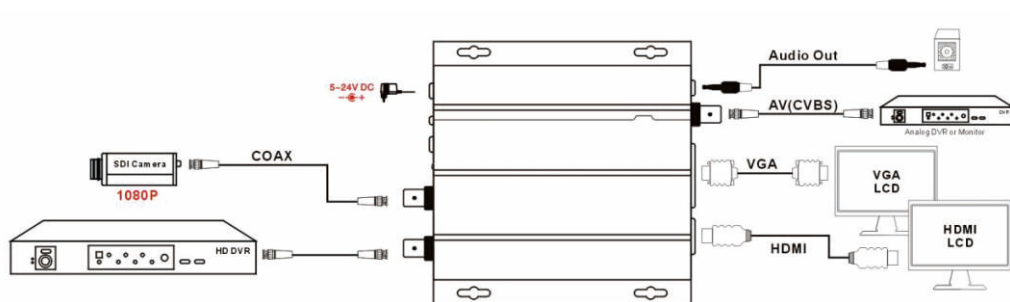
- ◆ SDI input formats: all formats are supported.
 - SD: 525i @ 59.94Hz, 625i @ 50Hz
 - HD: 720p @ 23.98Hz / 24Hz / 25Hz / 29.97Hz / 30Hz
720p @ 50Hz / 59.94Hz / 60Hz
 - 1080i @ 50Hz / 59.94Hz / 60Hz
 - 1080p @ 23.98Hz / 24Hz / 25Hz / 29.97Hz / 30Hz
 - 3G: 1080p @ 50Hz / 59.94Hz / 60Hz
- ◆ SMPTE standards supported: 259M-C, 292M, 424M, 425M level A and level B
- ◆ One SDI loopout port
- ◆ OSD and menu for operation interface
- ◆ Autodetects HDMI EDID info for optimal source-to-screen communications
- ◆ Supports asymmetric conversion of all formats
- ◆ Blue screen alarm for signal loss
- ◆ Manual VGA output 720p/1080p resolution selection
- ◆ SDI embedded audio conversion to HDMI output
- ◆ AV (CVBS) signal output (PAL/NTSC optional)
- ◆ Allows remote controller for selection of forced output mode



● **Technical Specifications**

Input socket	1×BNC SDI
Input signal type	SD-SDI(270Mbps),HD-SDI(1.485Gbps), 3G-SDI(2.97Gbps)
Input resolutions supported	525i 59.94, 625i 50 720p 23.98/24/25/29.97/30/50/59.94/60 1080i 50/59.94/60 1080p 23.98/24/25/29.97/30/50/59.94/60
SDI signal range	0.8Vp-p
SDI impedance	75Ω
SDI coupling type	AC coupling
SDI jitter (typical values)	SD-SDI≤0.1UI HD-SDI≤0.2UI 3G-SDI≤0.4 UI
Max. input cable length	Belden 1694A: SD-SDI 400m, HD-SDI 200m, 3G-SDI 140m
Note: test result of cable length may be different subject to different types of cables.	
SDI loop output	1×BNC SDI
HDMI output	1×HDMI
AV(CVBS) output	1×BNC
VGA output	1×VGA
Frequency bandwidth	165MHz / HDMI 1.3 standard compliant
Dimensions (mm)	154×119×36 (W×D×H)
Power supply voltage	5-24VDC

● **Connection Diagram**



SD Camera Auto-Tracking System

High Speed Dome Camera

GX-2200H

Speed dome specifications

Power supply	AC24V, 50/60Hz
Power consumption	15W (indoor)
Preset	128 positions
Auto tour	6 cruises
Pattern	40s
Alarm	4 channels input & 1 channel output
Privacy masking	24
Auto flip	rotate 180°
Auto pan scan	360° programmable
Pan speed	0° to 300°/s
Pan rotation range	360°continuous
Tilt range	90°
Tilt speed	0° to 120°/s
Control mode	RS485
Baud Rate	2400/4800/9600/19200 bps
Relative humidity	10-75%
Environment temperature	0°C to 40°C (indoor)
Weight	4 kg (with aluminum alloy ball)
Installation	indoor ceiling or wall mount



Camera specifications

Image Inductor	1/4" SONY EX-View CCD
Scanning system	2:1 interlacing
Resolution	≥480TVL
Effective Pixels	752 H × 582 V (440K) PAL
Sensitivity	0.2Lux, F1.6, 1/3s
Iris	Auto/ Manual
Focus	Auto/ Manual
Zoom Rate	22 × optical, 10 x digital
Angel of view	wide: 47°, tele: 2.2°
Balance compensation	Auto/ Manual
White balance	Auto/ Manual
Gain Control	Auto/ Manual
Signal-to-Noise ratio	≥50dB
Video output	1.0±0.2Vp-p/75Ω



High Speed Dome Camera

GX-2200K

● Technical Specifications

Image Inductor	1/4"Color CCD
Effective Pixels	752H×582V (440000pixels)
Synchronous Mode	Internal
VF Output	Compound Signal 1.0Vp-p/75Ω
White Balance	Automatic/Manual
Power Supply	DC12V±10% 1.2A
Power Consumption	12VA
Weight	2Kg
Mounting Style	Ceiling or ceiling hanging style
Relative humidity	10-75% (under no condensing)
Operation Temperature	0°C to 40°C
Scan System	15.625KHz(H) 50Hz (V)
Horizontal Resolution	480 TV lines
Signal / Noise ratio	Larger than 48 db
Electronic Shutter	1/3-1/10000 seconds
Lowest Temperature	0.01Lux (Day and night)/0.02Lux(Common), AGC ON
Zooming Range	(F3.9-f85.8 mm) 22×Optical and 10×Digital
Iris	Automatic/Manual
Focus	Automatic/Manual
Horizontal Turning	0-15°/s (constant P/T: 15°/s fixed)
Vertical Turning	0-15°/s (constant P/T: 15°/s fixed)
Preset Positions	64 presets (max)
Patrol Function	At best 6 cruises



Video Camera GX-2300T

Technical Specifications

Mounting Type	desktop mounting, ceiling mountable
Signal System	PAL / NTSC
Imaging Element	1/4" SONY Super HAD CCD
Effective Pixels (H×V)	752x582 (PAL) / 768x494 (NTSC)
Horizontal Resolution	480 TV lines
Synchronous Mode	Internal
Video Output	1.0±0.2Vp-p, S-Video
S/N Ratio	≥50dB
BLC	On/Off
Minimum Illumination	1.0 Lux/F1.4
Lens	f = 4.1-73.8mm, F=1.4
Zoom	18X optical, 2X digital
Video Connection	RCA jack, S-Video
Pan/Tilt Speed	Pan (0.1°-200°/s), Tilt (0.1°-150°/s)
Pan/Tilt Angle	Pan: 360° Tilt: -30 to 90°
Presets positions	PELCO-D/PELCO-P:255; VISCA:16
Control Interface	RS-485/422, RS-232
Protocols	VISCA, PELCO-P, PELCO-D
Baud Rate	1200/2400/4800/9600/19200bps
Address Range	0-255
Working Temperature	0°C-50°C
Humidity	0-95% (non-condensation)
Input Voltage	12VDC
Power Consumption	<10W
Dimensions	156×141×149mm
Net Weight	desk mount 1.1kg, ceiling mount 1.4kg
Accessories	remote controller, power adaptor



Speed Dome Controller GX-KB01

Function

Function

- ◆ Support Auto. The size is small, so the installation is very easy (compact size,easy installation)
- ◆ Support at most 4 cameras to work at the same time.
Supports up to 4 cameras



Technical Specifications

Communication Mode	Rs485 (connected with camera) 、 RJ45 (Connected with PC)
Power consumpition	15W
Power Supply	15V DC
Dimensions (H×W×D)	50mm×210mm×140mm (2in×8.3in×5.5in)
Weight	0.65Kg
Operating temperature	0~45°C
Storage temperature	-20~50°C